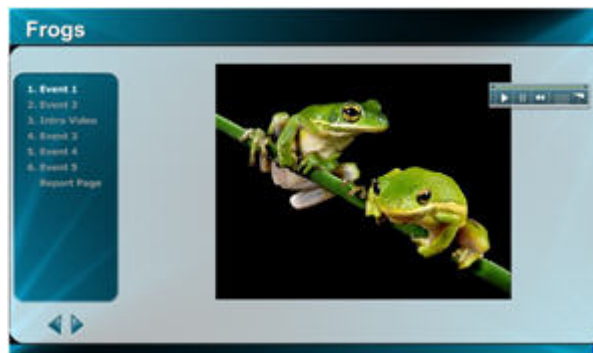




## Presenter

### ***Why Presenter?***

- Presenter is a great Star Interaction® for you to use to present information and quiz students on their understanding.
- Presenter enables students to check their answers immediately, gaining immediate knowledge of results. Once the student checks his/her answer, Presenter locks that item from future re-takes.
- Presenter makes it easy for you to add images, different layouts and assessment items to your presentations.
- For large text, Presenter automatically smoothes out the jagged edges of text, making your presentations more attractive than typical HTML-based presentations.



## ***Adding Pages:***

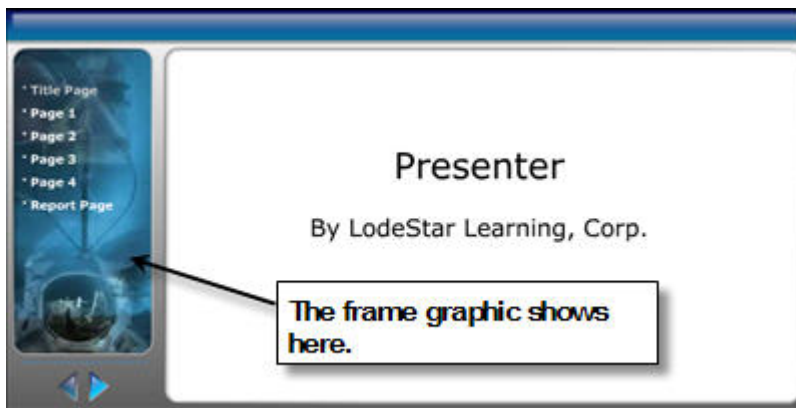
After navigating past the help page you will come to the first page of your presentation. With each page a layout is selected from the dropdown list. Some pages are for displaying text, some for images, and some are a combination of the two. In addition there are also a number of question layouts to select from.

### **Page Title field (pictured below).**

Page Title (Leave blank for defaults):

Title Page

As you add pages, you will see a Page Title field on every page. The titles that are entered into these fields appear on the page menu to the left of the activity. If you neglect to title your pages, default titles are assigned as pictured below. Keep your titles short.



## **Layouts**

There are seven layouts from which to choose.

For example, you will see a layout choice as follows:

Row 1: Text | Row 2: Image

This simply means that there are two rows. Row one will be occupied by text; Row two will be occupied by an image.

The fastest way to see what this layout looks like is to select it and watch the page get reformatted. You can always change your mind.

For some layouts you need to choose an image. There are many options for importing images to lodeStar. The simplest option is to simply copy from a web page and then right-click and paste into the image area. See the Teacher Guide for more details.

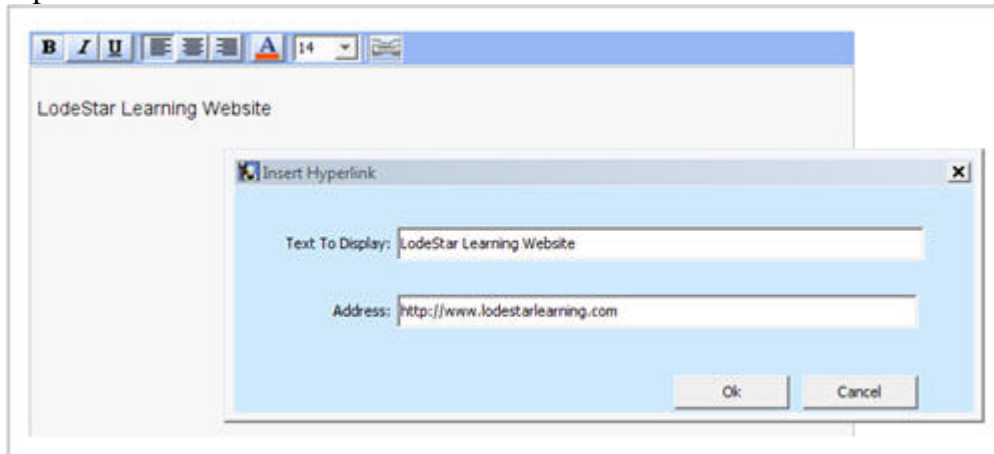
## **Question Pages:**

Questions can appear anywhere within the presentation. If at least one question is included in the presentation, a report page appears at the end. The report page gathers information on the student performance on all of the questions in the presentation. The question layout can be used in different ways. The top text box can be used to display useful information. To the right of the top text box appears an image area. You can ignore this or import an image through the various means that lodeStar supports. The long box below the top text box and image area is for a short question. If more space is needed, the top text box can be used.

Below the short question area, you will find four boxes. Place the correct answer in one box and three distractors in the remaining boxes. Distractors are the incorrect answers. Check off which distractors contain correct answers. More than one answer can be correct and the interface will utilize checkboxes rather than radio buttons.

## Hypertext Links:

Hypertext links can now be easily added by using the link button in the richtext toolbar. Once the icon is clicked, you will be prompted to enter a label and the internet address (URL) of the resource you would like to link to. These resources will be presented in a separate browser window when the user clicks the link.



## Adding Music or Narration:

Each page has the option of adding an mp3 asset. When an mp3 file is used a media controller is displayed on screen to allow the user to control the volume as well as play, pause, and rewind control.

## Adding Math Equations:

Any place that allows an image to be displayed can also display a math equation. lodeStar has a built in Latex math editor. To access the editor, right click on an image area and select *Equation Editor* from the menu. After you have entered an equation, click the *Render* button to see how it will be displayed. Click the *Use It* button to apply it to your image area.

### **Creating Zoomable Images:**

Often you may have an image that you want viewable at its original size. To enable this, copy your image to the clipboard, right click on the image area and select Advanced-Paste - Preserve Original. The image will still be formatted to appear in the predefined image area but when the user moves the mouse over the image, the cursor will appear as a magnifying glass. When the user clicks the image, it will zoom out to full size. The user needs to click the icon in the upper right corner to resume to normal viewing.



## ***Saving Your Presentation:***

When you've finished with your presentation, or even while you are creating the presentation, click on the 'save' button at the bottom right corner. Save often.

## ***Important note about Question Pages***

In the screenshot below, you will see a typical question layout. Questions can appear anywhere within the presentation. If at least one question is included in the presentation, a report page appears at the end. The report page gathers information on the student performance on all of the questions in the presentation.

The question layout can be used in different ways. The top text box can be used to display useful information. To the right of the top text box appears an image area. You can ignore this or import an image through the various means that lodeStar supports. The long box below the top text box and image area is for a short question. If more space is needed, the top text box can be used.

Below the short question area, you will find four boxes. Place the correct answer(s) in one or more boxes and distractors in the remaining boxes. Distractors are the incorrect answers. Check off which distractors constitute the correct answer(s). If more than one answer is correct, the options will be displayed as checkboxes rather than radio buttons.

Question

Click here

a)  ☐ Correct

b)  ☐ Correct

c)  ☐ Correct

d)  ☐ Correct