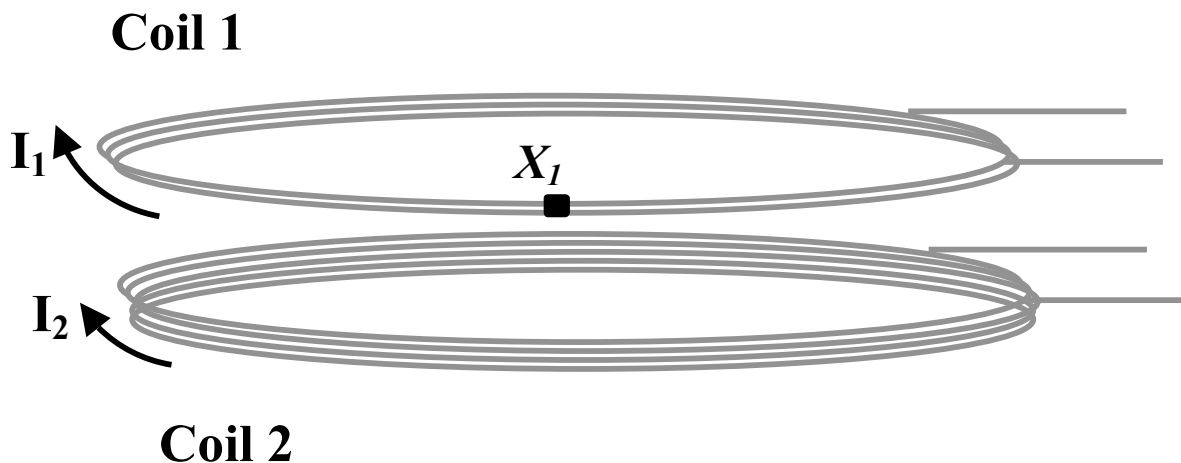


Problem 5 (20 points) Experiment MF

Shown below is a schematic view of the two coils in experiment MF. The currents in both coils are clockwise, as shown on the drawing, and the coils are centered on top of each other. The distance between the coils is small compared to their radius

- (a) Indicate on the figure the direction of the field due to coil 2 at point X_1 .
- (b) Indicate on the figure the direction of the force on coil 1 at point X_1 , due to the field from coil 2. Is the experiment set up for attraction or repulsion between the coils?



Problem 5 (20 points) Experiment MF

Shown below is a schematic view of the two coils in experiment MF. The currents in both coils are clockwise, as shown on the drawing, and the coils are centered on top of each other. The distance between the coils is small compared to their radius

- (a) Indicate on the figure the direction of the field due to coil 2 at point X_1 .
- (b) Indicate on the figure the direction of the force on coil 1 at point X_1 , due to the field from coil 2. Is the experiment set up for attraction or repulsion between the coils?

Attraction

